

NEGRO TEZAL

Technical Data Sheet



Quarry location: 37° 55' 6,52" N

6° 13' 0,10" W



Santa Olalla de Cala - Huelva, Spain

WWW.GRUPIMAR.ES

INFO@GRUPIMAR.COM

GRUPIMAR[®]
MARCELINO GROUP

Petrographic denomination	Biotitic Granite	UNE - EN 12407
Apparent Density (Kg/m3)	2800	UNE - EN 1936
Flexural Strength (MPa)	17,5	UNE - EN 12372
Water absorption (%)	0,1	UNE - EN 13755
Compressive strength (MPa)	138	UNE - EN 1926
Reduction in flexural strength after 48 cycles frost- thaw (%)	-	UNE - EN 12371
Breaking load at dowel holes (N)	3250	UNE - EN 13364
Abrasion resistance (mm)	15,4	UNE - EN 14157
Resistance to ageing by thermal shock (%)	0,01	UNE - EN 14066
Reaction to fire	Class A1	Commission Decision 96/603/EC



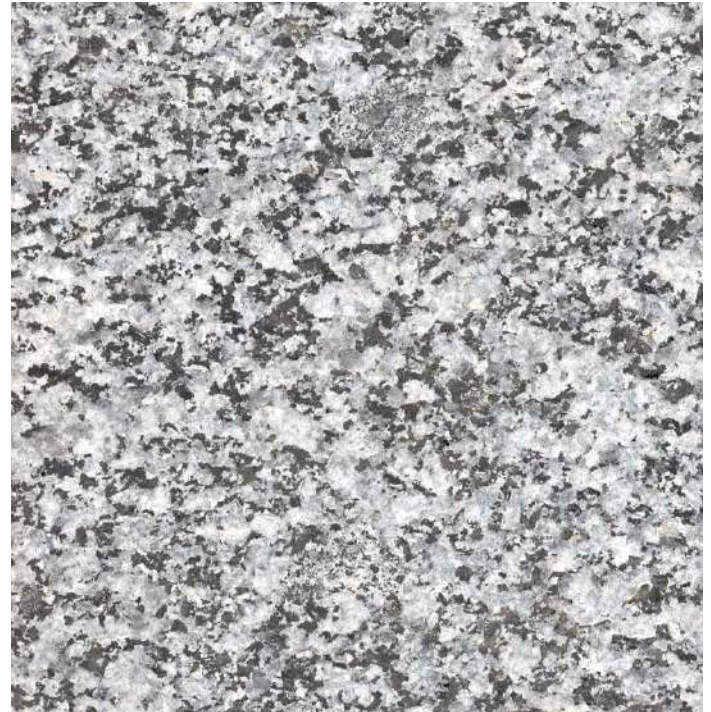
WWW.GRUPIMAR.ES

INFO@GRUPIMAR.COM

GRUPIMAR[®]
MARCELINO GROUP



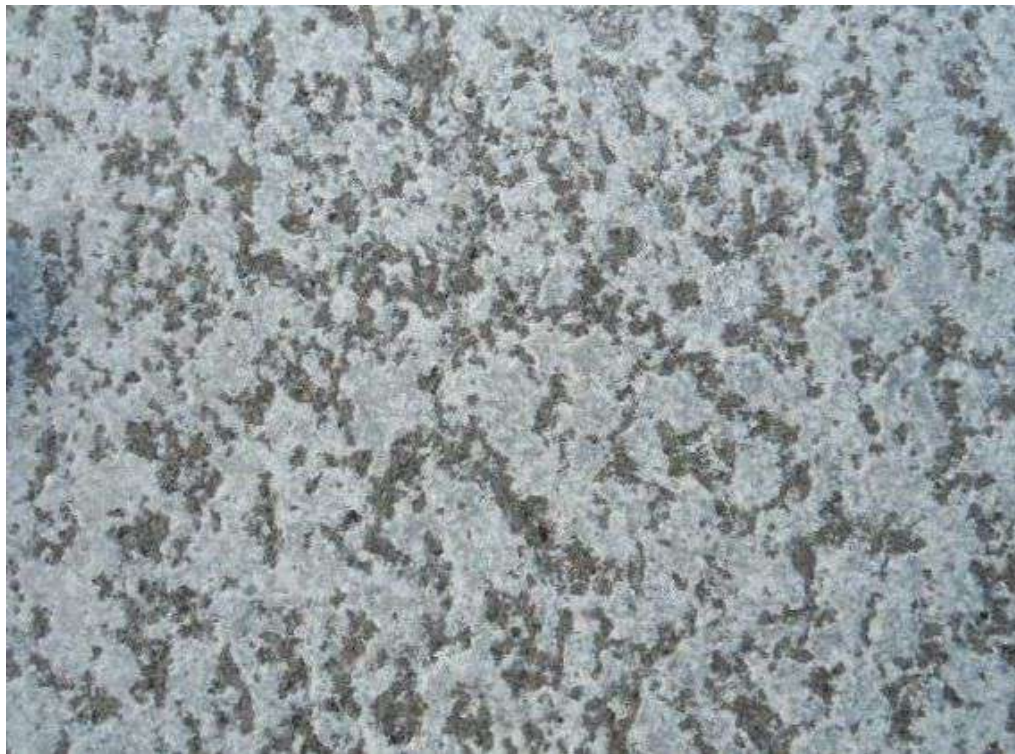
Flamed



WWW.GRUPIMAR.ES

INFO@GRUPIMAR.COM

GRUPIMAR[®]
MARCELINO GROUP



Shot Blasted

Polished

WWW.GRUPIMAR.ES

INFO@GRUPIMAR.COM





Shot Blasted

WWW.GRUPIMAR.ES

INFO@GRUPIMAR.COM

GRUPIMAR[®]
MARCELINO GROUP



Polished (left)
Flamed (right)

WWW.GRUPIMAR.ES

INFO@GRUPIMAR.COM

GRUPIMAR[®]
MARCELINO GROUP



Cobblestones

WWW.GRUPIMAR.ES

INFO@GRUPIMAR.COM

GRUPIMAR[®]
MARCELINO GROUP



Cobblestones

WWW.GRUPIMAR.ES

INFO@GRUPIMAR.COM

GRUPIMAR[®]
MARCELINO GROUP



Slab

WWW.GRUPIMAR.ES

INFO@GRUPIMAR.COM

GRUPIMAR[®]
MARCELINO GROUP



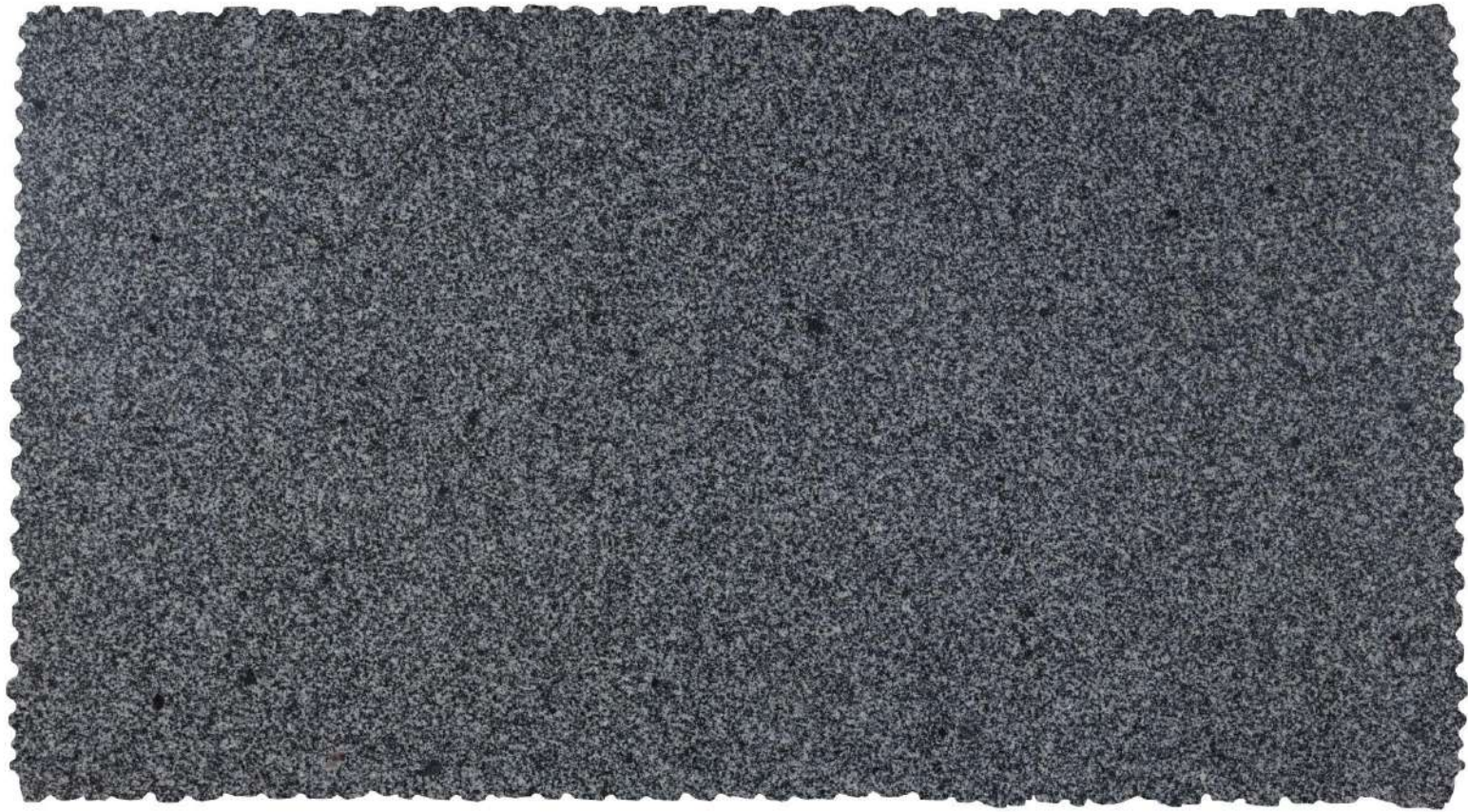
Slab



WWW.GRUPIMAR.ES

INFO@GRUPIMAR.COM

GRUPIMAR[®]
MARCELINO GROUP



WWW.GRUPIMAR.ES

INFO@GRUPIMAR.COM

GRUPIMAR[®]
MARCELINO GROUP





Carrascopein
Amsterdam, Nederland

WWW.GRUPIMAR.ES

INFO@GRUPIMAR.COM

GRUPIMAR[®]
MARCELINO GROUP



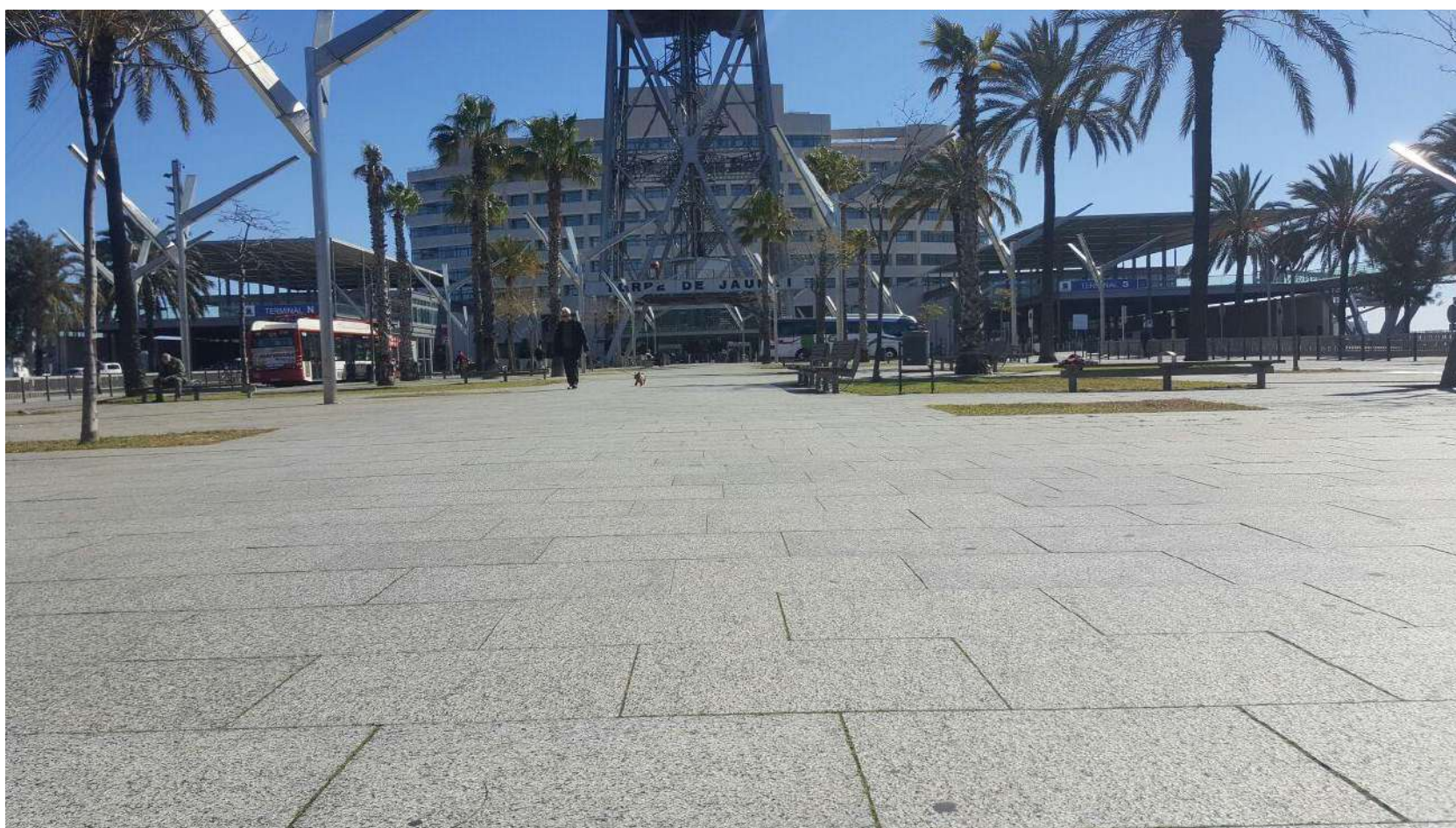
Carrascoplein
Amsterdam, Nederland

WWW.GRUPIMAR.ES

INFO@GRUPIMAR.COM

GRUPIMAR[®]
MARCELINO GROUP



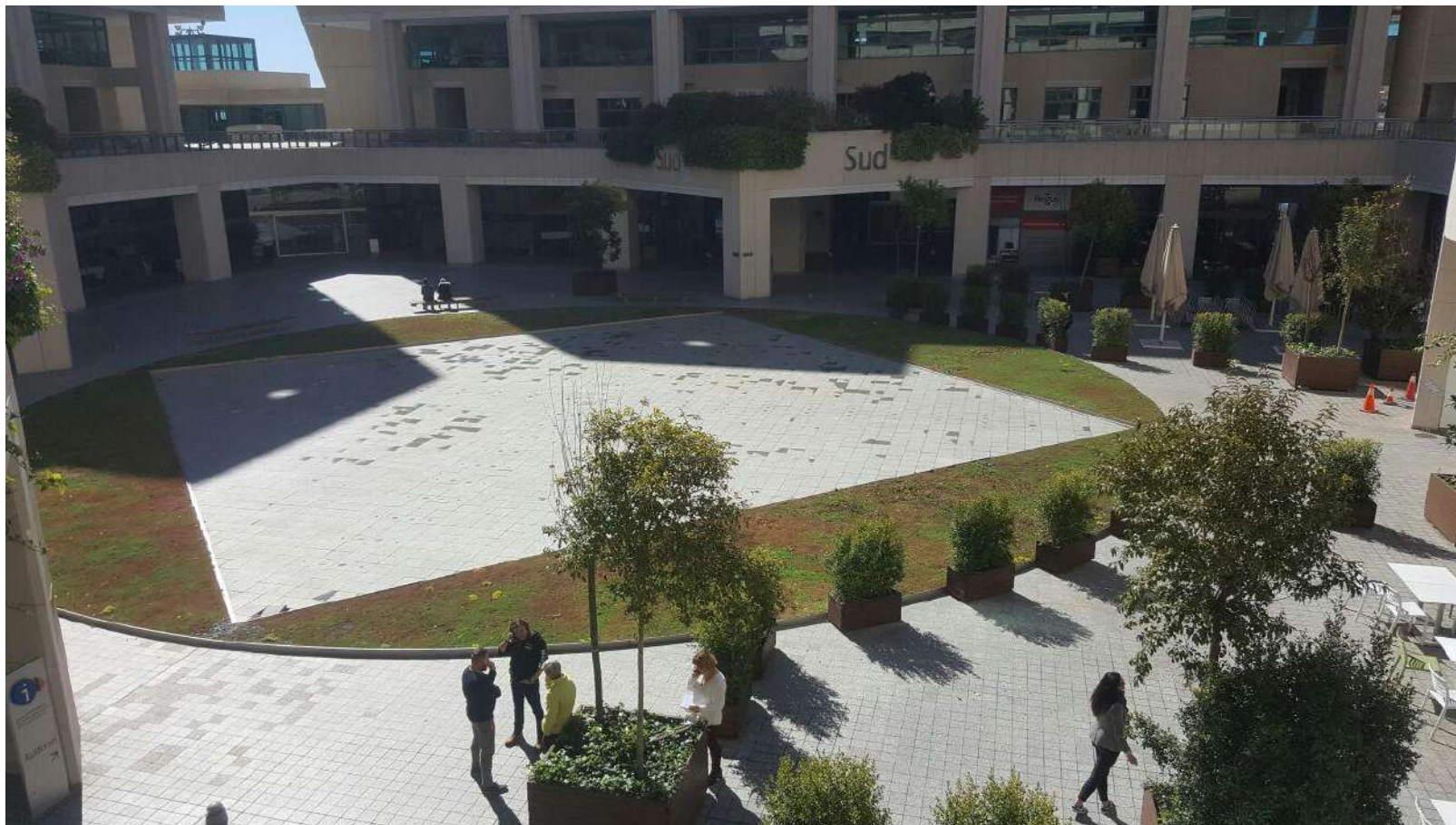


World Trade Center - Barcelona, Spain

WWW.GRUPIMAR.ES

INFO@GRUPIMAR.COM

GRUPIMAR[®]
MARCELINO GROUP



World Trade Center - Barcelona, Spain

WWW.GRUPIMAR.ES

INFO@GRUPIMAR.COM

GRUPIMAR[®]
MARCELINO GROUP



World Trade Center - Barcelona, Spain

WWW.GRUPIMAR.ES

INFO@GRUPIMAR.COM

GRUPIMAR[®]
MARCELINO GROUP



Negro Tezal Quarry
Santa Olalla de Cala - Huelva, Spain

WWW.GRUPIMAR.ES

INFO@GRUPIMAR.COM

GRUPIMAR[®]
MARCELINO GROUP



WWW.GRUPIMAR.ES

INFO@GRUPIMAR.COM

GRUPIMAR[®]
MARCELINO GROUP



WWW.GRUPIMAR.ES

INFO@GRUPIMAR.COM

GRUPIMAR[®]
MARCELINO GROUP



WWW.GRUPIMAR.ES

INFO@GRUPIMAR.COM

GRUPIMAR[®]
MARCELINO GROUP